



Run II

design by Studio V

via[®]
SEATING



Guest chair #931

Mid back #971

High back #981

Features

- Mid back chair, mid back tall stool, mid back extra tall stool, high back chair & guest chair
- Control Mechanisms: full function ergonomic synchro control mechanism with easy to use side tension adjustment
- Via Seating's comfort foam: a proprietary blend of high-density, injection-molded, closed-cell, cold-cured comfort foam
- Design for the Environment (DfE): Screened to the ANSI/BIFMA e3-2019 Annex B- List of Chemicals of Concern & CA Prop 65 List
- Sustainability: BIFMA LEVEL 2 certified & CLEAN AIR GOLD certified/certified low emitting
- Specify On: Spec It, CET, GSA (contract #GS-28F-005CA), Project Matrix, 2020 ("CAP/GIZA") & KITS Collaborator
- Weight Capacity: 300 lb
- Quick Ship/48-hour Manufacturing: 20 chairs made in 48 hours with stocked textiles where relevant
- Warranty: 12 year warranty, 5 years for mesh

Select Options

Arms



Black Basic #38A Grey Basic #38AG Black Roll Back #39A Black 8-way #51A Grey 8-way #51AG Polished 8-way #53A



Black Fixed Loop #31A Black Guest Loop Arm #30A Grey Guest Loop Arm #30AG

Bases



Black #18BB Magnet Grey #18GB Polished #18PB

Lumbar



No lumbar Black #LR2 Grey #LR2G

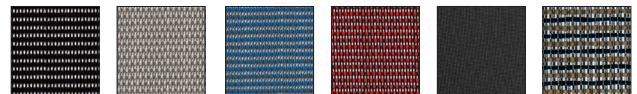
Select Finishes

Frame Colors



Matte Black #B Matte Grey #DG

Mesh Colors



Black #1R Grey #2R Blue #3R Red #4R Black Copper #11R Natural Copper Striped #13R



< Build & Quote your chair:
viaseating.com/spec-it/#/run-11

