



Onda
design by Studio V

via
SEATING



Upholstered seat

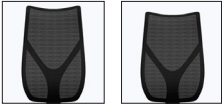
Mesh seat

Features

- Chair, Tall Stool, Extra-Tall Stool & *True* sit-to-stand chair with telescoping gas lift with a mesh or upholstered seat & mesh back
- Control Mechanisms: quick adjust advanced synchro with optional forward tilt + seat depth adjustment or body balance
- Via Seating's comfort foam: a proprietary blend of high-density, injection-molded, closed-cell, cold-cured comfort foam seat option
- Design for the Environment (DfE): Screened to the ANSI/BIFMA e3-2019 Annex B- List of Chemicals of Concern & CA Prop 65 List
- Sustainability: BIFMA LEVEL 2 certified & CLEAN AIR GOLD certified/certified low emitting
- Specify On: Spec It, CET, GSA (contract #GS-28F-005CA), Project Matrix, 2020 ("CAP/GIZA") & KITS Collaborator
- Weight Capacity: 300 lb
- Quick Ship/48-hour Manufacturing: 20 chairs made in 48 hours with stocked textiles where relevant
- Warranty: 12 year warranty, 5 years for mesh

Select Options

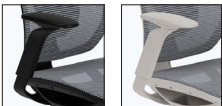
Backs



High
backs

Mid
backs

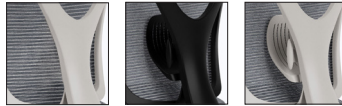
Arms



Black 6-way
#ONA1

Grey 6-way
#ONA2

Lumbar



No Lumbar
#NOLUM

Black
#OLUM1

Light Grey
#OLUM2

Select Finishes

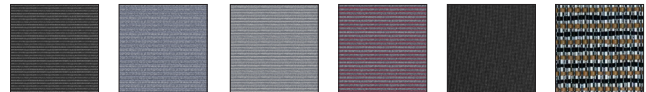
Frame Colors



Black
#OB

Light Grey
#OG

Mesh Colors



Black
#01O

Nickel
#02O

Silver
#03O

Red-Grey
#05O

Black
Copper
#13O

Natural
Copper
Striped #11O

Bases

High-Profile



Black
#27BB



Light Grey
#27GB

Low-Profile



Black
#18BB



Polished
#18PB



< Build & Quote your chair:
viaseating.com/spec-it/#/onda

