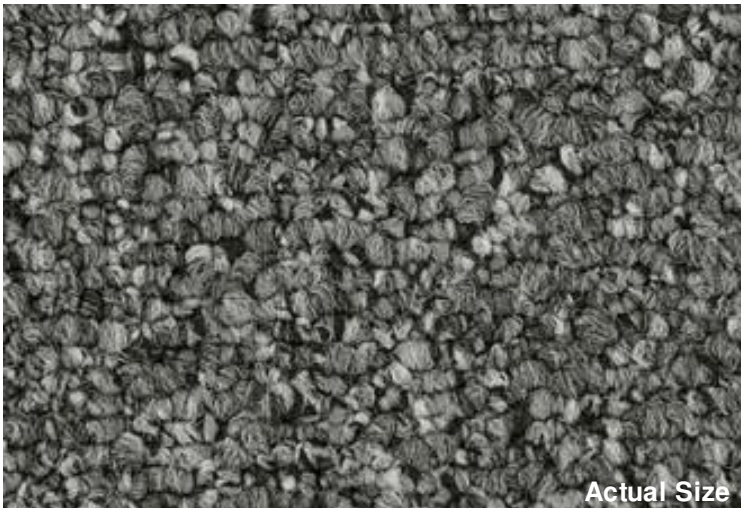


Pattern Reference



Actual Size



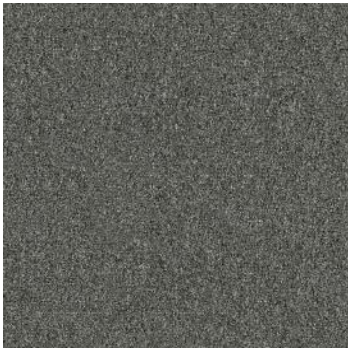
## Passages Modular (7037)

### Product Quick Specs

<b>Style Name/Number</b>	Passages Modular 7037
<b>Color Name/Number</b>	Route 2047
<b>Construction</b>	Textured Loop
<b>Selected Backing</b>	Nexus® Modular
<b>Dye Method</b>	Solution Dyed
<b>Fiber Type</b>	Encore® SD Ultima® (with recycled content)
<b>Face Weight</b>	20 oz./sy (678 grams/m <sup>2</sup> )
<b>Pile Density</b>	7452 oz./y <sup>3</sup> (276.32 kg/m <sup>3</sup> )
<b>Pattern Repeat</b>	N/A
<b>Gauge</b>	1/10 (3.94 rows/cm)
<b>Stitches</b>	8 stitches/in (3.15 stitches/cm)
<b>Standard Size</b>	24" x 24" approx. 60.96cm x 60.96cm
<b>Standard Adhesive</b>	Commercialon Premium Modular Adhesive
<b>Optional Adhesive</b>	TileTabs
<b>Smoke Density</b>	Less than 450 flaming
<b>Static Test</b>	Less than 3 kv
<b>Standard Warranties</b>	<a href="#">Encore SD Ultima Fiber</a> <a href="#">Nexus Modular</a> <a href="#">Commercialon Adhesive for Modular Carpet &amp; LVT</a>
<b>Optional Warranties</b>	<a href="#">Tile Tabs</a>



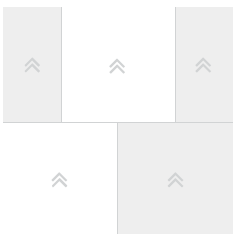
**Products Installed**



Passages Modular 7037  
Modular  
2047 Route

**carpet**

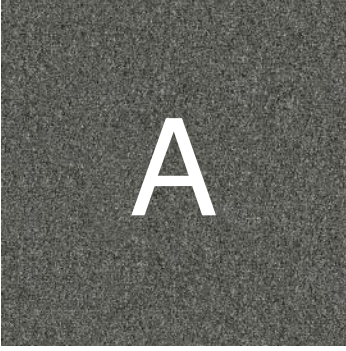
**Installation Method**



**Brick (24x24)**

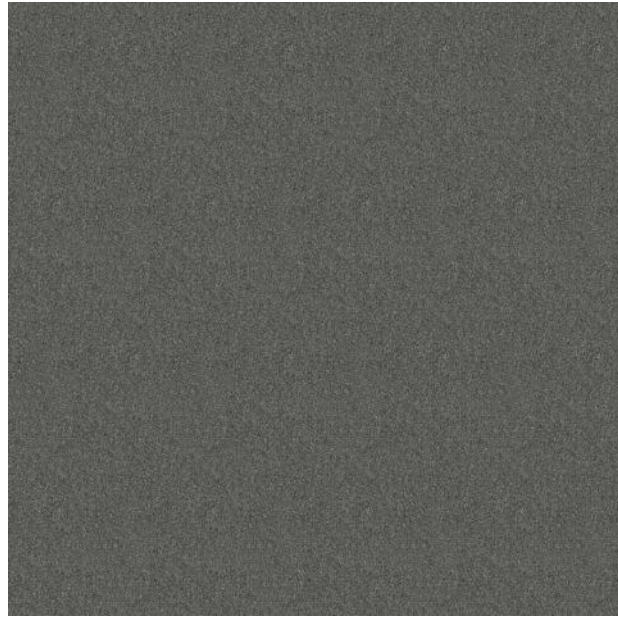
This three dimensional rendering is for visualization purposes only and may not be an exact representations of the selected products. Pile heights may vary from product to product and adhesive requirements may vary depending on product selection. The review of actual product samples are recommended before final selection. Please contact your J+J Flooring Group sales representative with any questions. This unique carpet design is protected under the U.S. Copyright Act of 1976. Any unauthorized copying or duplication of this design constitutes copyright infringement in violation of federal law.

Keys



Passages Modular 7037  
Modular  
2047 Route

Carpet



Pattern Diagram

