

TeamWorx





TeamWorx is a desking system that offers unique styling and unprecedented flexibility for today's changing office environment. TeamWorx allows you to maximize employee productivity while minimizing floor space. It's easy to install, easy to specify, and easy to reconfigure.

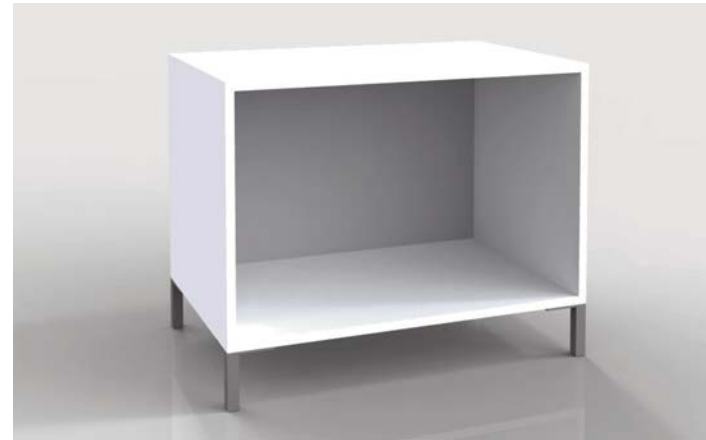




To enhance privacy and maximize personal storage, you can configure TeamWorx with a variety of storage and privacy options.







TeamWorx unique flexibility is based around Cargo Hubs, which act as a container for different storage inserts. Cargo Hubs can be ordered in various sizes, and the 16 different types of inserts [such as box-file pedestals, lateral pedestals, bookcases, and storage cabinets] can be easily reconfigured in the field.



TeamWorx Cargo Hubs rest on 5" steel legs.



The look of the pulls integrates with the other hardware.



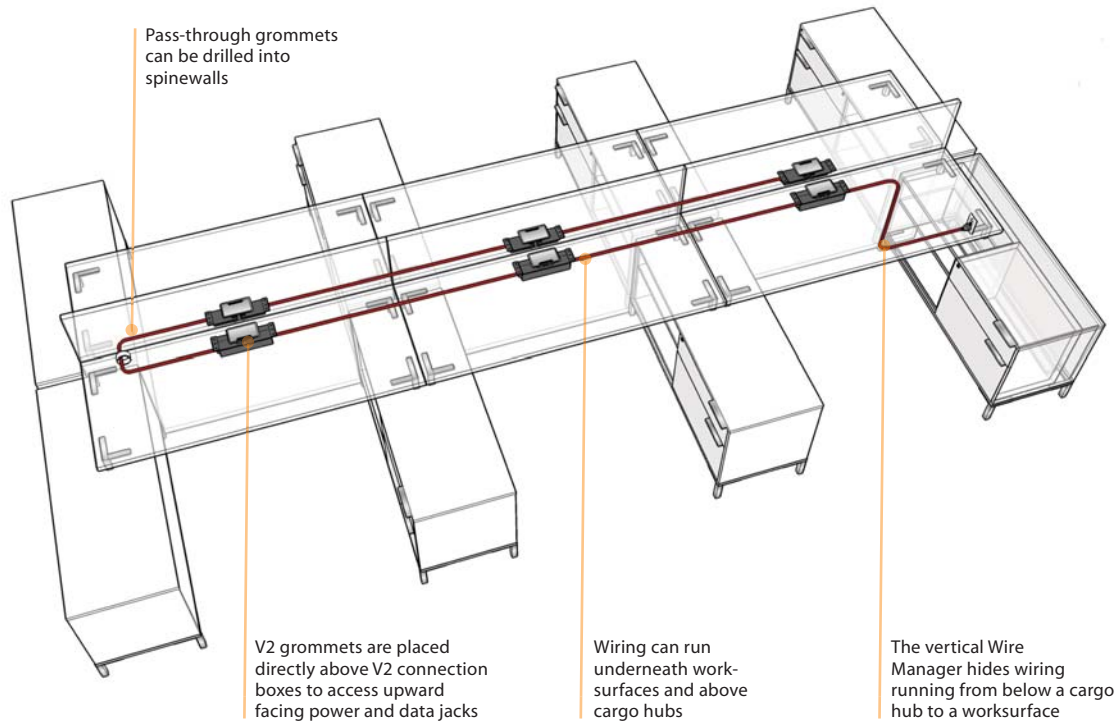
Steel clips secure glass, acrylic, and laminate privacy panels to worksurfaces and spinewalls.

Power and Data

TeamWorx offers multiple solutions for bringing power and data to workstations

V2 System

Our V2 system offers two upward facing power outlets, two side-facing electrical outlets (below the worksurface), and two upward facing data cut-outs.



V2 Connection Box



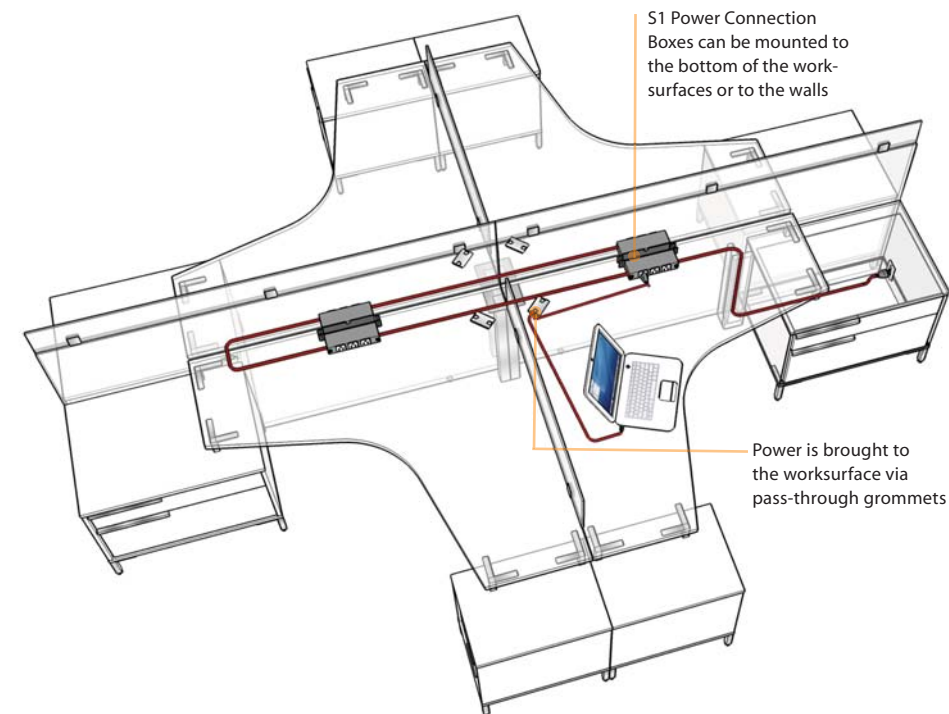
V2 flip-top grommet with closed door



V2 flip-top grommet with open door. Data cutouts are hidden behind the brush

S1 System

Our S1 system is a value-priced daisy-chained system that requires pass-through grommets to bring power cabling to the worksurface. It does not include data cut-outs.



S1 Connection Box



Silver Metallic Plastic Pass-through Grommet

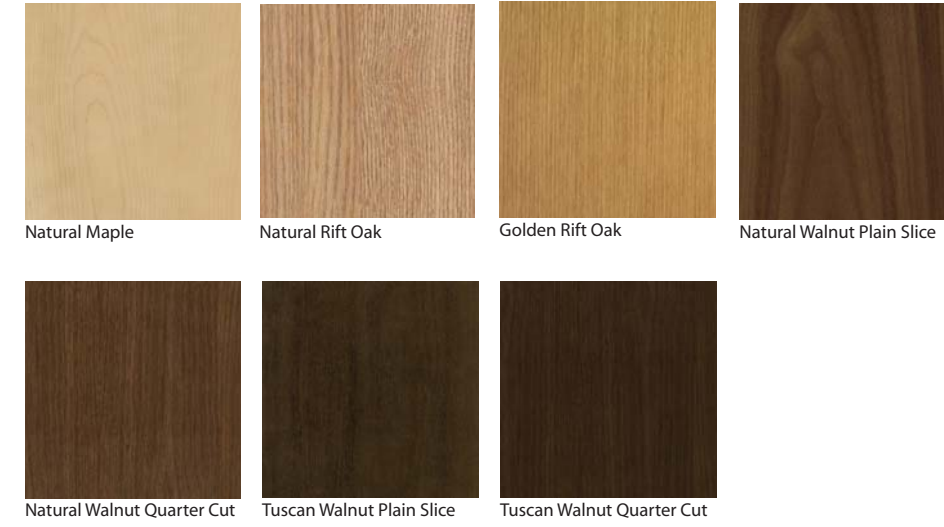
Black Plastic Pass-through Grommet



Steel Rectangular Pass-through Grommet

Wood Veneer Finishes

Available for worksurfaces, drawer fronts, and doors only.



Thermofuse Laminate Finishes



Due to variations in printing, the representation of the finishes shown here should not be relied upon for final purchasing decisions. DeskMakers is not responsible for mismatches in color between actual finishes and what is shown above.



TeamWorx was designed by Henner Jahns of Gecco Vision in Los Angeles. Mr. Jahns was born and raised in Germany, and has previously created products for manufacturers in both the United States and Europe. His designs have been displayed at the Museum of Modern Art in New York.